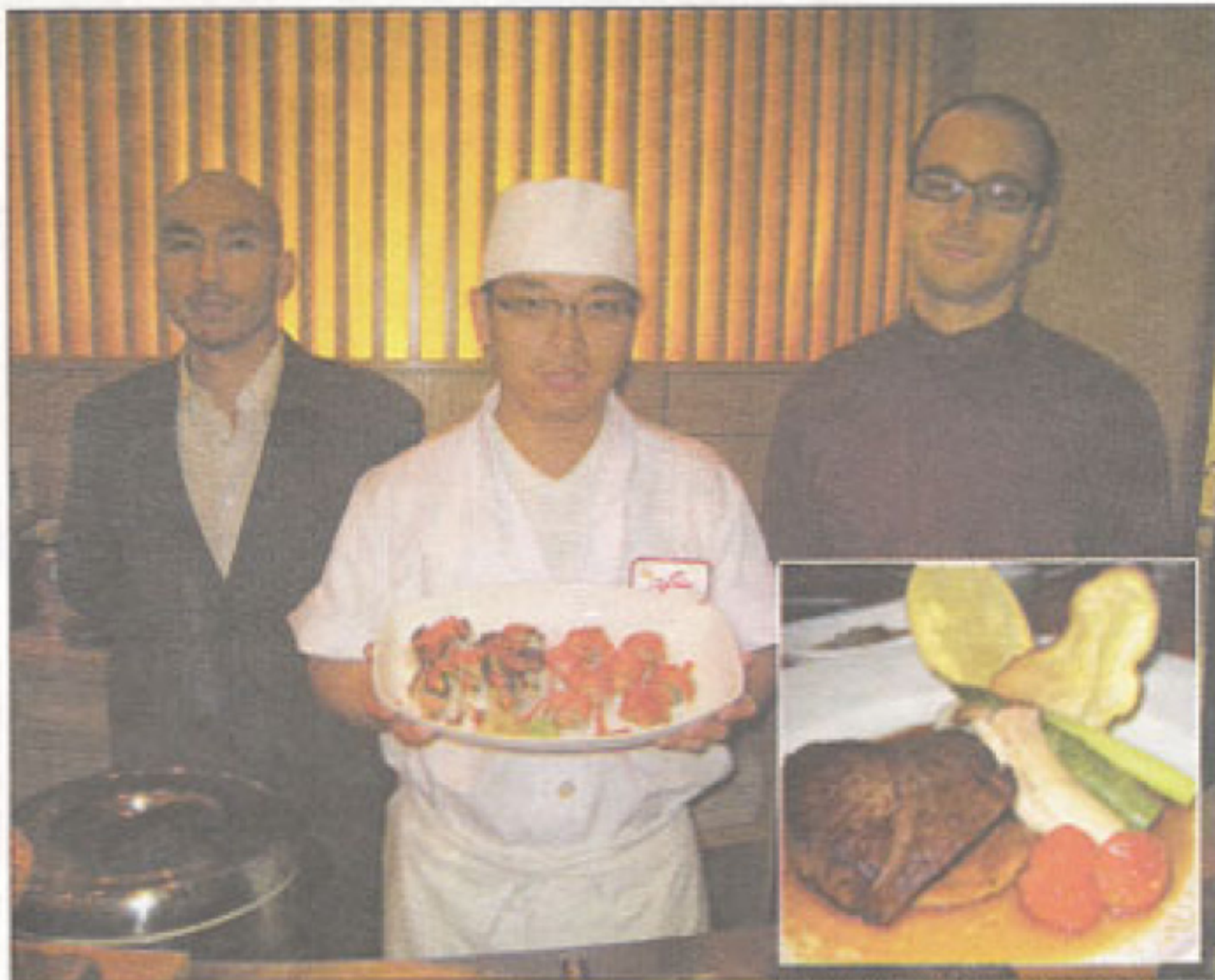


# NORTH SHORE TOWERS COURIER



## >diningout



THE NST Courier/ photos by Victoria Schneps-Yunis  
The staff at Shiro of Japan serve up great food in an ambient setting.

## Sushi And Hibachi Heaven

BY VICTORIA SCHNEPS-YUNIS

Run – do not walk, to a wonderful new restaurant in our borough – Shiro of Japan. It just opened in the stunningly beautiful Shops at Atlas Park in Glendale.

It is the newest sparkling gem in our borough, an outdoor shopping mall that will make your jaw drop as you make your turn into the parking area of the sparkling white holiday-lit two-story buildings built around a center grassy mall with a gazebo coffee shop, (with the only Steinmart in New York City).

It reminds me of the scene in the movie "The Music Man" where the band gathers round the gazebo singing "76 Trombones."

Shiro of Japan is located on the second level of the circular center. Set amidst a rich setting of woods and light, it will make you smile as you are greeted at the door.

There is a warm 50-seat sushi section on one side with the talented artists/chefs creating alluring dishes of sushi and sashimi. You can sit around the sushi bar or at one of the tables for 2-12 people.

Then, in a separate area, are the lines of hibachi tables where the chefs create a show and a meal all at once.

In the rear (where there is a terrace for outdoor dining) is a private hibachi party room. In fact, the night I was there, a local civic association was having their holiday party there.

Let me not ignore the fabulous food!

What I particularly liked about the service and setting was the presentation and quality of the food. The fresh fish creations were all succulent, the spices enhancing the flavors. The sushi was as beautiful to behold as they were tasty to eat.

From soups, to appetizers, to main courses and desserts, there is something

## Shiro Of Japan

THE SHOPS AT ATLAS PARK  
80-40 Cooper Avenue at 80th Street  
Glendale

718-326-8704

Hours: Monday to Friday  
from noon to 3 p.m.

Monday to Thursday from 5 to 10 p.m.  
and Friday 5 to 11 p.m.

Saturdays from noon to 11 p.m.

Sundays from noon to 9 p.m.

Directions: Glendale is just on the other side of Woodhaven Boulevard from Forest Hills. Yellowstone Boulevard ends at Woodhaven and then Cooper Avenue begins on the western side where the cemeteries are. Drive up Cooper Avenue and about a half-a-mile on your left is the shopping center with a large indoor parking lot.

for everyone to enjoy. My 16-year-old step-grandson Joe Peterson summed it up by saying, "This is the best food I ever ate!" Out of the mouths of babes!

By the way, this location has the same ownership as Shiro on Old Country Road in Westbury. There is also a handsome well-stocked cherrywood bar serving cocktails, specialty wines and beers, and name brands too.

Therefore, whether it's for a drink or a spectacular meal in the sushi or hibachi rooms, you will be delighted by the experience. Shiro of Japan is open seven days a week and is handicapped accessible. They can seat up to 350 people and credit cards are accepted.

A bonus for shoppers is the many one-of-a-kind stores you can visit before or after your meal. The Shops at Atlas Park are a "must go" on your shopping and dining journey for the holidays. Enjoy!